



Community Revitalization Training Center
 PO Box 82267
 Columbus OH 43202-0267
 (800) 282-2782 or (614) 262-6662
 Fax: (614) 262-3282
 support@crtc.com

RESPEC Version 8.6.3 Installation Notes

ALWAYS MAKE A BACKUP OF YOUR EXISTING FILES BEFORE YOU INSTALL NEW SOFTWARE!

PLEASE READ THIS ENTIRE DOCUMENT BEFORE INSTALLING RESPEC! Turn off all other programs before doing the install.

The RESPEC install program does not add or modify ANY windows system dlls and does not modify the Windows registry. The install program only uncompresses the program files and installs icons.

UPGRADING Version 8

If you have a version of RESPEC before 8.6.0 currently installed, your current data file is in ..\Program Files\RESPECx\Data. Because of changes to Windows, the new version installs by default into c:\CRTC\RESPEC8. Be sure to copy your data file (..\Data\respec.mdb and Housing.mdb) and any customized reports into the new directory(s) before doing the update. We recommend that you retain the entire old ..\Respec directory to make it easy to reinstall the old version if that is required.

The database conversion files are now included in the .\RESPEC8\Bin directory so you don't need to download them individually. Just run them to update your data. You only need to run each one once. Running the conversion again will give errors (as the new changes will already be in place) but will not harm anything.

If your program is installed on the network, your data may be in a different folder, but the procedure is the same.

Conversion will need to be used as follows:

upgrading from version	to version	use each conversion program ONLY ONCE
7.x	8	V8DbUpdate.exe then V820DbUpdate.exe then V840DbUpdate.exe then V860DbUpdate.exe then V862DbUpdate.exe
8.1.0	8.2.0	V820DbUpdate.exe then V840DbUpdate.exe then V860DbUpdate.exe then V862DbUpdate.exe
8.2.0 or 8.3	8.4.0	V840DbUpdate.exe then V860DbUpdate.exe then V862DbUpdate.exe
8.4.0 or 8.5	8.6.0	V860DbUpdate.exe then V862DbUpdate.exe
8.6.0 or 8.6.2	8.6.3	V863DbUpdate.exe

If your data does not convert correctly and/or you get errors please contact us at support@crtc.com.

General Notes:

Installation on Stand Alone Systems:

Install as shown in this document. In the Setup Type dialog, select "Full/Server".

NETWORK INSTALLS

A network installation places the program and data files on the server and installs only the required support files on the local computers. If you are installing on a network you should only need to do a full install on ONE computer. On the other computers do a Compact/Workstation install. See the steps below. **THE IMPORTANT THING TO REMEMBER IS TO POINT ALL COPIES OF RESPEC TO THE SAME PLACE ON THE NETWORK.**

If you are installing on a Window Server computer you may need to have your system administrator install the software.

You must run the installation program on each computer that will access RESPEC.

- 1) On the 1st computer - Select a network drive for the shared program and data files and install RESPEC. Use the "Full/Server Setup" (see pg5).
- 2) On ALL other computers – Use the "Compact/Workstation" install. Be sure to select the same drive and directory name that you used for the first installation. The drive letters do not have to be the same on the clients, but they should reflect the same disk volume.
- 3) Run the SetUser Program – If you have a multi-user license you must enable it. Your software should have been shipped with a disk labeled SetUserCount. Just insert this disk into the drive and run the program. You will only have to do this once. Future updates should not change the user count.

UNINSTALL

Uninstalling the RESPEC8 directory will destroy all of the case and spec data. Be sure to backup the data first if you are going to reinstall.

To uninstall the program from a standalone local computer or from the network server, delete the RESPEC8 directory, the c:\RSPTemp directory and remove the desktop and startup icons.

To uninstall the program from a network workstation computer, delete the c:\RSPTemp directory and remove the desktop and startup icons.

**Questions? Problems? Call RESPEC Tech Support
at (800) 282-2782 or (614) 262-6662.**

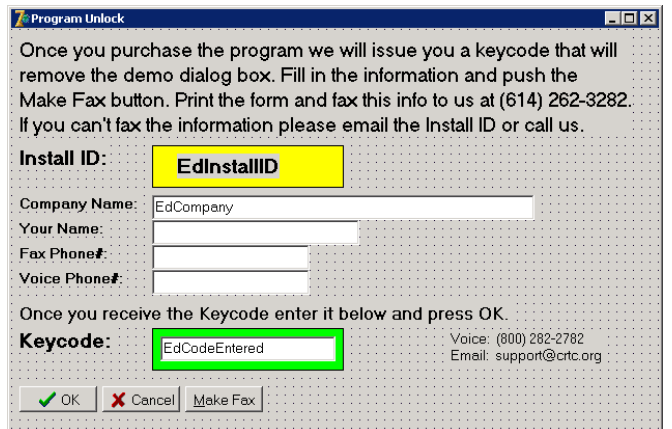
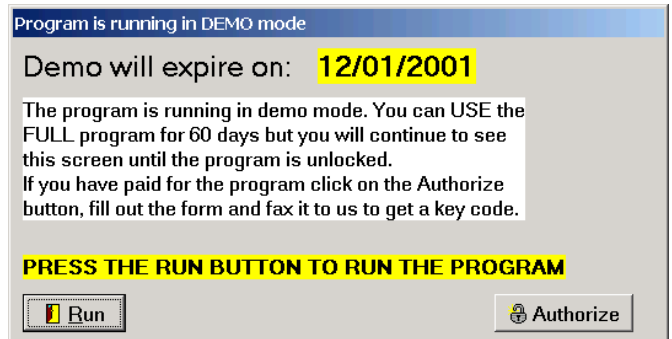
Installing RESPEC 8

Unlocking the Program

RESPEC installs as a 2-month demo. To continue using the program after that, you must obtain an authorization keycode from CRTC. Push the Close button to start using the program. Push the Authorize button to see the next dialog.

Fill in the information requested. To make a copy of the info that you can fax, push the Make Fax button and print the form.

Push the cancel button to return to the previous form. Push the Close button to start using the program.



In order to complete your installation of RESPEC for Windows, you must obtain a **KeyCode** from CRTC. *You have 60 days to do this.* **We recommend that you use the fax method of obtaining a KeyCode!**

By FAX: After you have entered your Company name and phone numbers, push the Print button. A form will be printed on your default printer. Write your name, phone number and fax number in the spaces provided on the form and fax it to us at the number shown on the form. Press the Exit button if you want to quit the installation. You can restart it again later.

By EMAIL: Send your name, your company name and the InstallID to support@crtc.com.

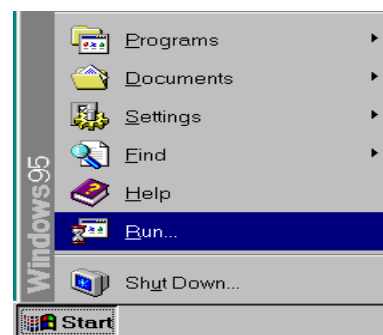
By PHONE: Call (800) 282-2782 and ask to speak with RESPEC Tech Support. If a support tech is not available, **leave a message** with the InstallID, your name, company, phone number and your Fax number.

Once you receive your KeyCode, bring up the Program Unlock dialog, type it into the box and press the OK button. After this you will not see the Demo form anymore unless you have to reinstall the program.

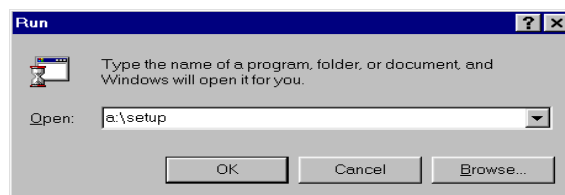
Installing RESPEC 8

Installation Procedure:

Insert the CD-ROM into the drive and it should automatically run. If it does not, push the Start button and then select Run.

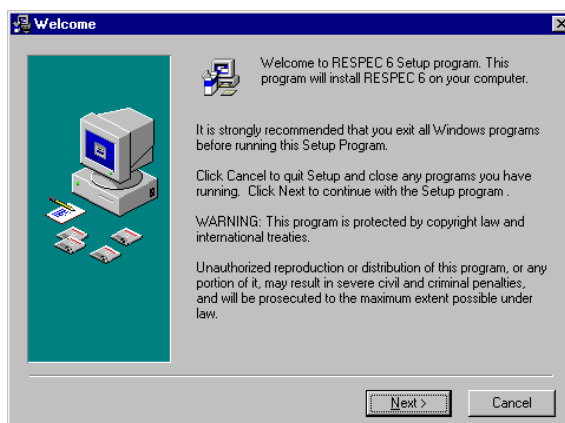


In the dialog box type in X:\setup where X is the drive letter of your CD-ROM.



Follow the on-screen prompts.

The Welcome to RESPEC setup appears. Click on the Next button to continue.

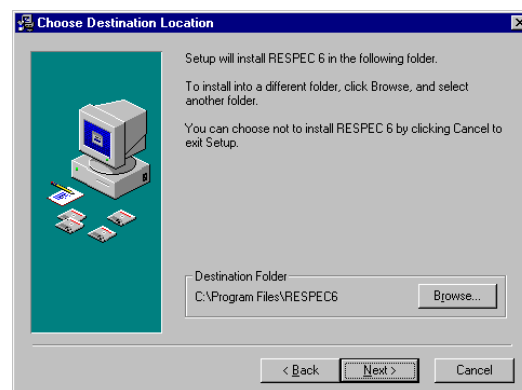


You must agree to the License Agreement before installing the program. Press the Next button.

The Choose Destination Location dialog appears

By default, RESPEC will install in a directory called c:\crtc\RESPEC8. You can change this by selecting the Browse button.

If you don't want to change the default, press the Next button.



Installing RESPEC 8

We recommend that you do not install RESPEC in any directory other than the default one (Program Files), but you can if you must.

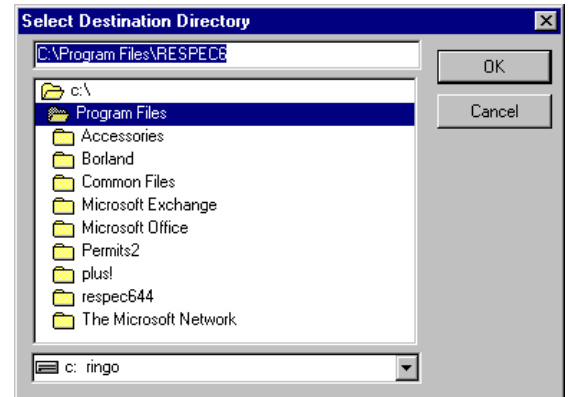
If you press the **B**rowse button, the **Browse for Folder Dialog** is shown.

Use the **D**rives pull down menu to select another drive.

You can type in a drive letter and path name and select the **O**K button, or you can click on an existing directory. If the directory that you want to install to does not exist on that drive (e.g. ProgramF), you will have to type in the name by hand and use the **C**reate New Folder button.

Press **O**K to accept the path.

THE BEST PROCEDURE IS TO USE ONLY THE DRIVES BOX AT THE BOTTOM TO CHANGE TO THE DRIVE YOU WANT TO INSTALL ON. THIS WILL INSTALL RESPEC IN THE DEFAULT DIRECTORY ON THE DRIVE YOU SELECT (e.g. E:\Program Files\RESPEC8).

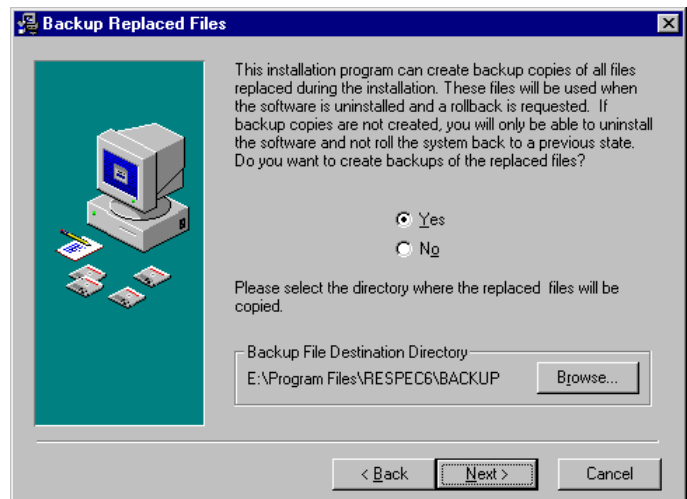


Once you have selected an install directory, press the **N**ext button to continue the installation.

NETWORKS

YOU MUST ALREADY HAVE A DRIVE MAPPED TO THE PLACE THAT YOU WANT TO INSTALL RESPEC ON BEFORE YOU START THE INSTALL.

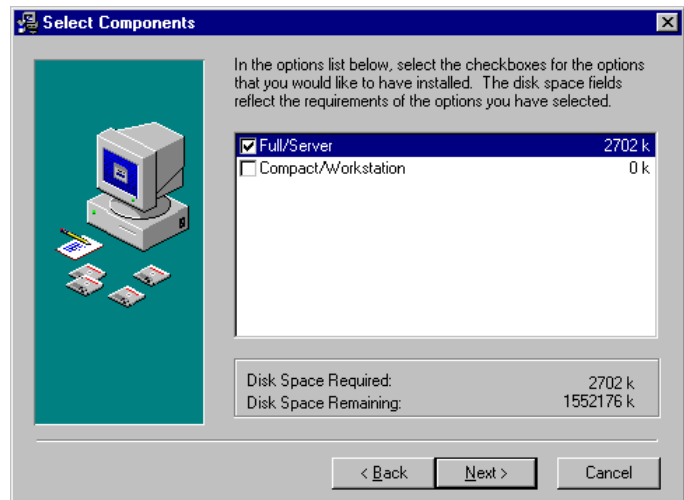
The RESPEC install can now make backups of any file replaced during the install. You should say **Y**ES to let the installer do this.



Installing RESPEC 8

There are two install types – Full/Server and Compact/Workstation.

For stand-alone computers (not on a network), select the Full/Server button and press next.



Networks:

For the first time installation, select Full/Server. This will install all required files for the workstation and will install the data and executable files onto the server drive. You can do the install from one of the Client computers but you must install the files on a network drive. From then on, and for all other workstations, select Compact/Workstation. Be SURE that you select the same directory on the network that the program was initially installed in. This will only install the local files for the workstation. For example, if you installed the first computer into n:\Program Files\RESPEC8, you should select that same directory for the next install. The drive letters do not have to be the same, but they must point to the same location on the network.

After all files are copied, the program will create start menu items and icons. When all files are copied, the final dialog (Setup Complete) appears.

Click Finish to exit the install.

UPGRADING ONLY

If you are upgrading from V8.40 you must run the V8.60 & V8.62 database update programs now. If you are upgrading from an earlier version of RESPEC please see the table at the beginning of this document. Be SURE sure to copy your data file to ..\crtc\RESPEC8\data first. You will need to overwrite or rename the existing demo data file. The updates are located in the ..\crtc\RESPEC8\Bin directory. Just double click them to run them.

You should now be able to click on the desktop icons and start the program.

If you have a multi-user network license, copy the SetUsers.exe file from the floppy or email into the RESPEC8\Bin directory. Double click on the file, push the OK button and the program will increase the max user count.

If you have a multi-user network license and did not receive a copy of the SetUsers program, please contact tech support.

